



Early Intervention and the Family Role

Renee Polanco Lucero, PhD, LSLS Cert. AVEd
Utah State University
June 27, 2017

Agenda

- What is early intervention?
- The brain and early intervention
- The role of the family

How Many Hours in a week?



What is Early intervention?

- A system of services to help children with disabilities or delay and their families
- The Individuals with Disabilities Education Act (IDEA) ensures that children with hearing loss receive free, appropriate public education (FAPE):
 - From birth to age 3 (part C)
 - Throughout school years, ages 3-21 (part B)
- Early intervention services are family-centered



Goal of early intervention

- Help your child stay on schedule with his or her speech, language, and communication skills
- Enhance your understanding of your child's hearing loss and special communication needs
- Support your family in a way that helps you feel confident in raising your child with hearing loss
- Keep track of your child's progress and to make decisions for intervention and education each step of the way as your child develops

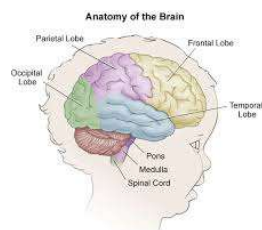
• <http://www.asha.org/public/hearing/Early-Intervention-for-Children-with-Hearing-Loss/>

Earlier is better!

Children with hearing loss who receive early intervention and are fitted with hearing technology by 6 months old have better "outcomes"



Why Earlier?



Brain research

- Neural circuits are most flexible during the **first three years** of life.
- Persistent **“toxic” stress** can damage the developing brain.
- The brain is strengthened by **positive early experiences**
- Early social/ emotional development and physical health provide the foundation for **cognitive and language skills**
- High quality early intervention services can improve outcomes for children, families, and communities.

• The Center on the Developing Child at Harvard University (2010)

Use it or lose it

- *Important to stimulate the auditory centers*
- *Neurons on the auditory centers of the brain get “recruited” to other areas of the brain*



The most important part of brain development:



Quantity Vs. Quality of talk

- More is not always necessarily better
- How and what you say to you child is important!



Hearing aids and language

- *Well-fit HAs reduces risk and provides some degree of protection against language delay.*
- *Early HA provision results in better early language outcomes*
- *Consistent HA use provides some protection against language delay and supports auditory development.*
- *Qualitative dimensions of caregiver input influence child language outcomes*

• Moeller et al (2015)

Factors that influence outcomes

- *Aided audibility*
- *HA use*
- *Characteristics of the language environment*



UNITY POEM

Thank you for participating today!
renee.lucero@usu.edu

See you next month!
Tuesday, July 18, 2017 - 11:00 AM to 11:15 AM MT
Topic: Mainstreaming Success

register at www.heartolearn.org